



# CHURCH OF ST. LUKE THE BELOVED PHYSICIAN PARISH PROFILE 2025



## **Our Mission:**

We seek to bear witness to the transformative power of Jesus Christ's redeeming work and holy life for all people as we worship, celebrate, and serve.



# Table of Contents

Welcome Letter	1
Who We Are	2
Whom We Seek	3
Where We Live	4
Our History	6
Campus	7
What We Do	9
Demographics	12
Survey Results	13
Financials	14
Prayer for St. Luke's in Transition	15



# Welcome Letter

Welcome to the Church of St. Luke the Beloved Physician. Founded amidst the ravages of tuberculosis in a village centered on healing, St. Luke's offered solace to the suffering. Today, a high percentage of our congregation engages with a life of ministry beyond the pew, in both the church and in our community. While our weekly practice centers on the Eucharist, most of us also maintain daily devotions outside communal worship.

Our prayer is for a rector full of the love of God, faithful in personal prayer and discernment, who can offer compassionate pastoral care. We are asking God to send us someone who is welcoming and approachable, who will minister to all people and share inspirational preaching as we strive to embody the Kingdom of God in a world still suffering.

Most of us revel in the natural beauty of our surroundings, enjoying the forested mountains and bodies of water. We are proud of our gritty, quirky town, where winter is celebrated and the arts flourish. We are eager to welcome a rector who could also learn to love this unique environment, with whom we can celebrate our local dynamism and share our prized ski trails, hiking paths, and swimming holes.

Through your discernment and prayer, should you feel that God may be calling you to become our next rector, we would be happy to consider your application. Please contact our Transition Officer, Fr. William Hinrichs, as detailed on the back page, so he can facilitate an introduction.

In His Love –

Susan Nagle Olsen

Senior Warden

Church of St. Luke the Beloved Physician



## Who We Are

St. Luke's is a warm, faith-driven church hoping to better reach and serve our wider community. Because we meet and worship as a family, we enthusiastically celebrate together and support each other during life's challenges. As our parish ages, we have concerns about the future vitality of St. Luke's, but that concern is secondary to our hopes and prayers for the work God intends for us to do.

Our average Sunday attendance of 51 individuals is split nearly evenly between the 7:45 a.m. and 10:00 a.m. services; both celebrate with the Rite II format. The earlier service is quiet while the later service is accompanied by an organ and, post-pandemic, a budding choir. Our survey indicates that the majority of parishioners appreciate a blend of traditional and contemporary music. Many of those attending services also enjoy coffee-hour in the Parish Hall afterward.



Morning and Evening Prayer are held Monday through Thursday with up to six attendees. A majority of survey respondents want to continue this at least once a week.

Many parishioners attend additional services during Advent, Lent, celebrations of saints, and other special occasions. We also enjoy potluck dinners and other opportunities to celebrate together.

Concerns include the need to honor and care for our older parishioners, while also inviting younger participants and people who have not previously experienced a Christian community to share in a meaningful spiritual life.

St. Luke's core is one of compassion, generosity, spiritual longing, and connection. There is room for differences of opinion and discussion of a range of thinking, but the highest priority is love and respect for each other and for God.

***"St. Luke's is a second home, it's family. I feel a strong connection to the church."***



## Whom We Seek

The Church of St. Luke the Beloved Physician seeks a prayerful rector who can be a spiritual role model. We seek a visionary who is approachable and compassionate, welcoming and accepting of all people. We hope to call a rector whose sermons connect the lectionary readings to modern life and help us live into our faith throughout the week. We also desire that our next rector will provide pastoral care and engage in the community, especially through the Ecumenical Council. We hope this individual will facilitate and support lay ministry, delegate tasks and, with the help of the Vestry, be a diligent administrator.

We welcome the opportunity to embrace the person whom God sends us.



***"Church has been a part of my life, my whole life. When I don't go to church, I miss it. St. Luke's helps me in my relationship with God."***





# Where We Live

Saranac Lake sits within the six million acres of the Adirondack Park, widely known as The Adirondacks, just south of the Canadian border. There are breathtaking opportunities to celebrate God's creation in the endless lakes, rivers, mountains, and woods. Winter snow provides days of beautiful alpine and nordic skiing; the incredible blossoming of spring into summer provides countless opportunities for paddling and hiking. Fall is an explosion of leaf color that inspires paintings, photos, and gasps of wonder at God's generosity.

Saranac Lake, with a population of 4,900, has strong ties to arts and healing. In 2022, Adirondack Health, the area's local hospital, received the Performance Leadership Award for Rural Health from the Choartis Center. Bionique Testing Laboratories and Trudeau Institute conduct research science and wellness in the global world of health.

The village enjoys an eclectic mix of art and music in summer parks and year-round venues. Pendragon Theatre, with both professionals and non-professionals, is in the process of getting a new home. For children, the carousel, featuring hand-carved Adirondack animals, is a big hit.



# Where We Live

PlayADK is a current work in progress, with a planned opening in 2026. It will be an interactive museum where children grow through play and imagination. All are good examples of the dedication and volunteerism that are found here.

Saranac Lake has an award-winning school district (SLCS.org). It also features two colleges, North Country Community College, with a two-year degree, and Paul Smith's College, with a four-year degree. A local airport that is a gateway to the wider world is a 15-minute drive from town.

Saranac Lake boasts the longest-running Winter Carnival and Ice Palace in the U.S. The celebration provides 10 days of indoor and outdoor family fun with games, events, shows, fireworks, and a parade. Our community also offers alpine skiing and tubing at Mt. Pisgah and cross-country skiing and mountain biking at Dewey Mountain. The newly opened 36-mile rail trail is enjoyed year-round by locals and visitors.

A variety of restaurants are within walking distance of the church rectory or a short drive to Lake Placid. Lake Placid, home of the 1932 and 1980 Winter Olympics, also offers opportunities at its venues for both recreation and for viewing sports on an international level.

We invite you to view the following websites for more details and photos: [SaranaLake.com](http://SaranaLake.com) and [visitadirondacks.com](http://visitadirondacks.com).

***“St. Luke’s is a place that feeds my spirit and helps me work through difficulties in life. It helps me in my relationship with God.”***





# Our History

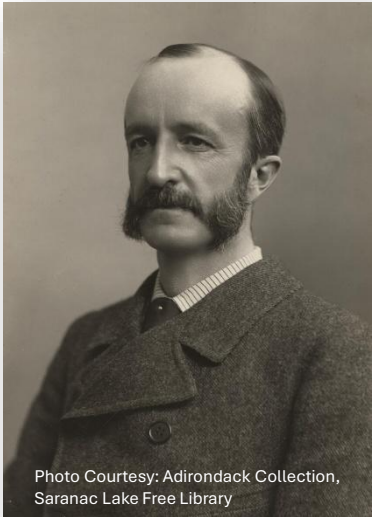


Photo Courtesy: Adirondack Collection, Saranac Lake Free Library

Initially settled in 1819, Saranac Lake was a hub for lumberjacks, outdoor recreationists and their guides. In 1873, Dr. Edward Livingston Trudeau came to Saranac Lake very ill with tuberculosis. To his astonishment, his health improved. He subsequently began a long career in medicine and research to treat patients and find a cure for the “white plague.”

The Episcopal Church of St. Luke the Beloved Physician, the first church built in Saranac Lake, was completed in 1879 in response to the spiritual needs of tuberculosis patients and their caregivers. Dr. Trudeau was responsible for St. Luke’s fundraising and served as church treasurer and warden for thirty-eight years until his death in 1915.

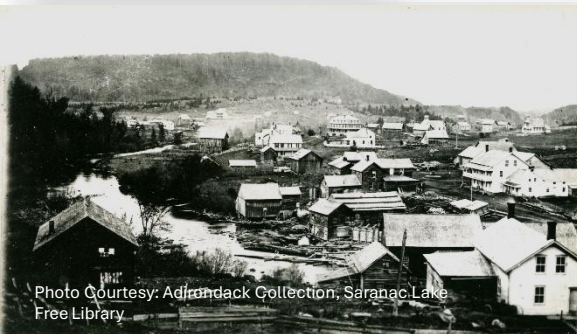


Photo Courtesy: Adirondack Collection, Saranac Lake Free Library



Photo Courtesy: Adirondack Collection, Saranac Lake Free Library

*“St. Luke’s provides me with my spiritual compass.”*

# Campus



St. Luke’s campus is made up of five buildings. The church itself was designed by Richard M. Upjohn. The one-story wood-frame building, with the traditional Episcopal red door, has an accompanying wooden interior that offers a warm welcome even on the coldest winter days. Its pointed-arch, stained-glass windows enhance the sanctuary and the nave, and a stained-glass rose window high on the western wall fills the church with a gentle glow at sunset. St. Luke’s is known for these beautiful windows that reflect the congregation’s dedication to healing and the arts. Our pipe organ, donated in 1994 by a parish family, and accompanying carillon share their beautiful sound both in and outside our church.

The Parish Hall, with its professional kitchen, is well-equipped for gatherings and celebrations. The Hall is visited by the attendees after both morning Sunday services for coffee hour. It accommodates groups of 80 people for buffet or sit-down. Outside groups such as Rotary Club, Alcoholics Anonymous, and a free community lunch program use it for meetings. It is linked to the church through a hallway that has a small children’s room and classroom.



The Baldwin House, purchased in the 1950’s, is currently used for a variety of church and community activities including Sunday Quaker Meetings, other private and group meetings, ecumenical outreach and community support. Ample space allows other functions to be easily included. All three buildings (the church, Parish Hall, and Baldwin House) are joined by a connector that is ADA compliant.





# Campus



The four-bedroom rectory is located next to the Parish Hall. It is an older house designed to comfortably accommodate a family of four or more. The rectory's lower level contains a beautiful formal living room, dining room, study with built-in bookcases and cozy fireplace, half bath, and a kitchen with attached areas for storage and laundry. A rear exit from the kitchen leads to a stone patio perfect for family relaxation, grilling, and quiet enjoyment of the gardens and visiting wildlife. The upper level is accessed by a graceful wooden staircase and includes a master bedroom with attached bath, a second large bedroom, two smaller bedrooms, and an additional bathroom. Two enclosed porches provide light, fresh air, and peaceful views of the surrounding trees and church campus. The lovely pollinator and perennial gardens provide beauty and privacy.



Topping the two-car garage is the Cure Cottage, named in honor of the residences that housed convalescing tuberculosis patients. It is a small apartment, which has been available to anyone needing a temporary place to stay while in Saranac Lake. It has welcomed friends and relatives, visiting priests and bishops, caregivers or family members of hospitalized patients, and has been used as a quiet retreat for our own parishioners.



*"I love St. Luke's buildings ... the architecture and history."*

# What We Do



St. Luke's offers a wide variety of activities and groups serving its parishioners and the entire community.

**Services:** St. Luke's holds two Sunday communion services, at 7:45 a.m. and 10:00 a.m. Morning and Evening Prayer are offered Monday through Thursday at 9:00 a.m. and 4:30 p.m., respectively. Other special services are held throughout the year.

**Vestry:** Our Vestry acts as the lay representatives of the church in the Episcopal tradition. Separately, the members also participate in or act as liaisons to several commissions and committees. These include Adult Christian Formation, Altar Guild, Buildings and Grounds, Finance, Hospitality and Fellowship, Ladies' Guild, Lay Ministry, Music, Outreach, Pollinator Project, and Stewardship.

**The Good News Group and the St. Benedict Project:** These encourage intellectual and spiritual growth of its members.

The **Good News Group** focuses on examining current events through the perspective of the good news of the gospel.

The **St. Benedict Project** complements this intellectual content by emphasizing the act of listening with "the ear of the heart," as taught in the Rule of St. Benedict. This group, established in 2023, pairs with the newly created Albany Blooms initiative, both of which share the same focus.





# What We Do



**The Monday Night Study Group:** Led by the church's former rector, this group studied subjects such as CS Lewis' *Screwtape Letters*, understanding parables, and took a closer look at Sunday's Collects. Participants look forward to continuing this evening study group.

**The Eager Elders:** These individuals meet monthly to discuss the many aspects of aging gracefully. Topics include physical, social, and theological interests and concerns. The group has also hosted symposiums about end-of-life care.

**St. Luke's Paddle Group:** Formed last spring, these parishioners and friends enjoy weekly water adventures to celebrate God's gift of beauty through nature.

**The Community Lunchbox:** This independent 501(c)(3) organization was started over 30 years ago by a St. Luke's deacon and continues today. The Lunchbox uses the Parish Hall every Monday and Thursday to prepare and serve on average 160 meals per week. There are over 40 volunteers from the community who prep, serve, and clean. Its mission is to, "provide nutritious meals to people who might not otherwise have such meals and to provide an opportunity for fellowship and social interchange to those same people."

**Grace Pantry:** Open every Wednesday, from 3 to 5 pm, the Ecumenical Council's Grace Pantry operates in the Baldwin House. It provides household and personal care products as well as pet supplies for about 45 community families in need.



# What We Do



**Adult Winter Coat Drive:** This offering was initiated eight years ago and takes place every other year. Organizers collect gently used, clean, adult coats during the year. Throughout the two-day November event, volunteers help those in need find a suitable coat for the Adirondack winters. The 2024 drive gave away 185 coats.

Finally, St. Luke's provides space for a variety of community meetings. The **Quakers** meet in the Baldwin House parlor Sunday mornings. **Holy Trinity Lutheran Church** has its Sunday evening services in the church. **Rotary** of Saranac Lake gathers in the Parish Hall for their weekly meetings. St. Luke's also provides a safe and friendly environment for **Alcoholics Anonymous**, who use the Parish Hall three times a week.

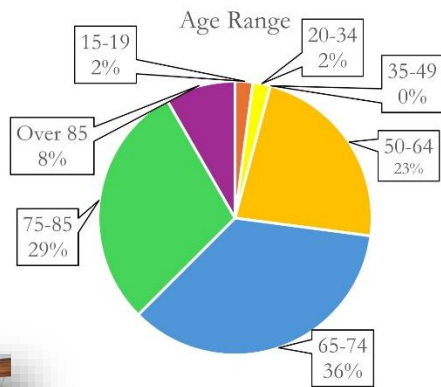


*"I like that I can participate and use my talents."*

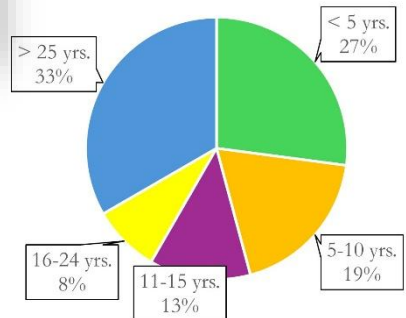


# Demographics

The following charts are a representation of the makeup of the St. Luke's Church congregation.



Number of Years Attended St. Luke's



*"St. Luke's has become my second home."*



# Survey Results

The Search Committee created a survey to help determine who we are as a congregation and the characteristics we seek in our rector. Results were tabulated through Constant Contact. Subsequently, five 90-minute Listening/Sharing Sessions were held with a maximum of ten parishioners at each. All the information was recorded, put into similar response categories, and analyzed.

## GOALS:

- Continue to be a prayerful community
- Attract new parishioners and create initiatives that provide appealing opportunities for young people
- Expand our work in the wider community, including ecumenical involvement
- Increase revenue for the health of St. Luke's, our mission fulfillment, and the continued maintenance of our buildings and grounds

## PARISH STRENGTHS:

- 89% consider their worship at St. Luke's a vital expression of their faith
- 70% think that their gifts and talents are recognized and valued at St. Luke's
- 79% have a strong sense of belonging to this congregation
- 66% believe St. Luke's supports them in their Christian journey
- 80% have their own devotional practice outside St. Luke's
- 67% feel St. Luke's is a caring and loving congregation

## TOP CHARACTERISTICS FOR ST. LUKE'S NEXT RECTOR:

Prayerful, welcoming, gives sermons that help us live our faith through the week, provides pastoral care, good administrator, visionary, and open to ecumenical involvement

*"I enjoy the rituals and traditions offered at St. Luke's."*







# Financials

St. Luke's finished 2024 with a balanced budget and continues to have a healthy endowment, in excess of \$1,000,000.00. There were 41 pledging units in 2024. There are now 43.

	2010	2015	2020	2023	2024
Income from paishioners/guests	\$ 195,756	\$ 181,568	\$ 135,844	\$ 169,263	\$ 176,160
Income from investments	\$ 40,000	\$ 36,000	\$ -	\$ 15,250	\$ 40,000
Income from outside users	\$ 6,340	\$ 5,126	\$ 8,550	\$ 17,867	\$ 16,218
<b>Total Income</b>	<b>\$ 292,921</b>	<b>\$ 277,583</b>	<b>\$ 181,291</b>	<b>\$ 231,304</b>	<b>\$ 245,105</b>
Capital Improvements	\$ 49,943	\$ 7,129	\$ 248	\$ 301	\$ 1,475
Utilities	\$ 29,778	\$ 29,109	\$ 25,504	\$ 41,705	\$ 36,049
Administration	\$ 12,064	\$ 17,012	\$ 18,951	\$ 22,338	\$ 24,741
Payroll	\$ 122,243	\$ 131,832	\$ 76,903	\$ 130,521	\$ 121,035
Diocesan assessment	\$ 25,991	\$ 21,623	\$ 6,142	\$ 15,415	\$ 17,679
<b>Total Expenses</b>	<b>\$ 301,994</b>	<b>\$ 275,365</b>	<b>\$ 164,759</b>	<b>\$ 237,981</b>	<b>\$ 232,192</b>
<b>Pledging units</b>	73	64	46	50	41
<b>Pledge Revenue</b>	<b>\$ 172,532</b>	<b>\$ 179,506</b>	<b>\$ 122,144</b>	<b>\$ 109,549</b>	<b>\$ 103,624</b>
<b>Investment value/end of year</b>	<b>\$ 926,299</b>	<b>\$ 921,917</b>	<b>\$ 1,095,451</b>	<b>\$ 1,136,738</b>	<b>\$ 1,236,722</b>

*“I like to give back and contribute to the church.”*



# Prayer for St. Luke's in Transition



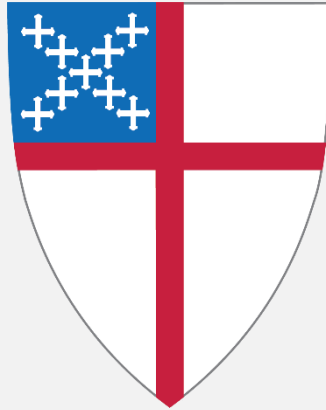
Gracious and Almighty God, who knows our needs even before we ask, we thank you for the many blessings you have bestowed upon St. Luke's Church and for the natural beauty that surrounds us. We ask that you look with favor upon our community and help us to hear your voice, that we may be open to new ideas and fresh perspectives, willing to step out in faith and embrace the unknown.

Counsel those who shall choose a rector for this parish. Grant us the wisdom to see each candidate through your eyes, to discern the qualities that will best serve our congregation. May our next priest, O Lord, lead us with faith, wisdom and grace. May they be a beacon of light, proclaiming the love of God to all people.

We trust in your perfect timing and provision, Dear Lord, knowing that you have a plan for us that is greater than we can imagine. May your will be done in all things, and may our search be guided by your hand.

We pray this in Jesus' name, Amen.

*“When I was searching for a church, I went to all that were in town before I found my home at St. Luke's.”*



***Vestry Members***

Senior Warden - Susan Olsen  
Junior Warden - Diana Gill  
Laird Bishop  
Maurice Brown  
David Collins  
Margo Cooper  
Debbie Duso  
Leah Finlayson  
Ann Marenick  
Jolene Robinson  
Dave Staszak  
Treasurer- Keith White  
Clerk - Maggie Mortensen

***Search Committee***

Chair - Susan Olsen  
Margo Cooper  
Diana Gill  
Ann Marenick  
Maggie Mortensen  
Franny Preston  
Jolene Robinson  
Dave Staszak  
Susan Steen  
Keith White

To apply, please email your cover letter, resume, and OTM portfolio to the Albany Office of Transition Ministry at [whinrichs@albanydiocese.org](mailto:whinrichs@albanydiocese.org).

Thank you for your consideration.

Church of St. Luke the Beloved Physician  
136 Main Street  
Saranac Lake, NY, 12983